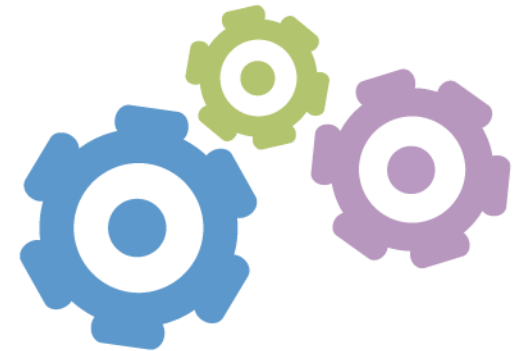


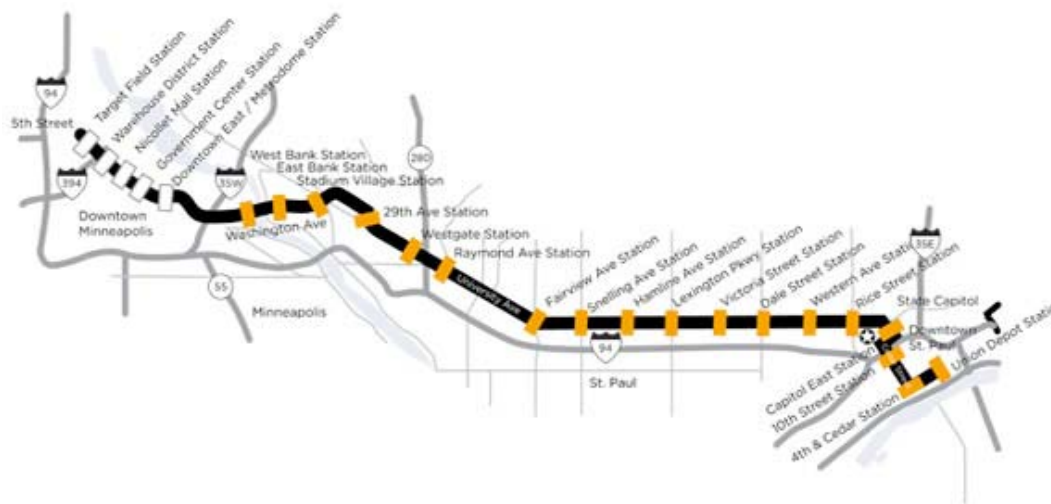


**Twin Cities Local Initiatives Support Corporation**  
**Using Our Investments,**  
**Partnerships, and Knowledge**  
**to Help Communities**  
**Transform Themselves**





# Accelerating Economic Development by Leveraging Art and Cultural Assets along the Central Corridor





# Project Approach & Methodology

Asset-Based  
Community  
Development

Collective  
Impact

Bias towards  
Action



Interviews with  
Stakeholders

Consultation of  
Advisory Committee

Research of  
Models



# Project Findings: Conditions

Initiatives are community or business driven

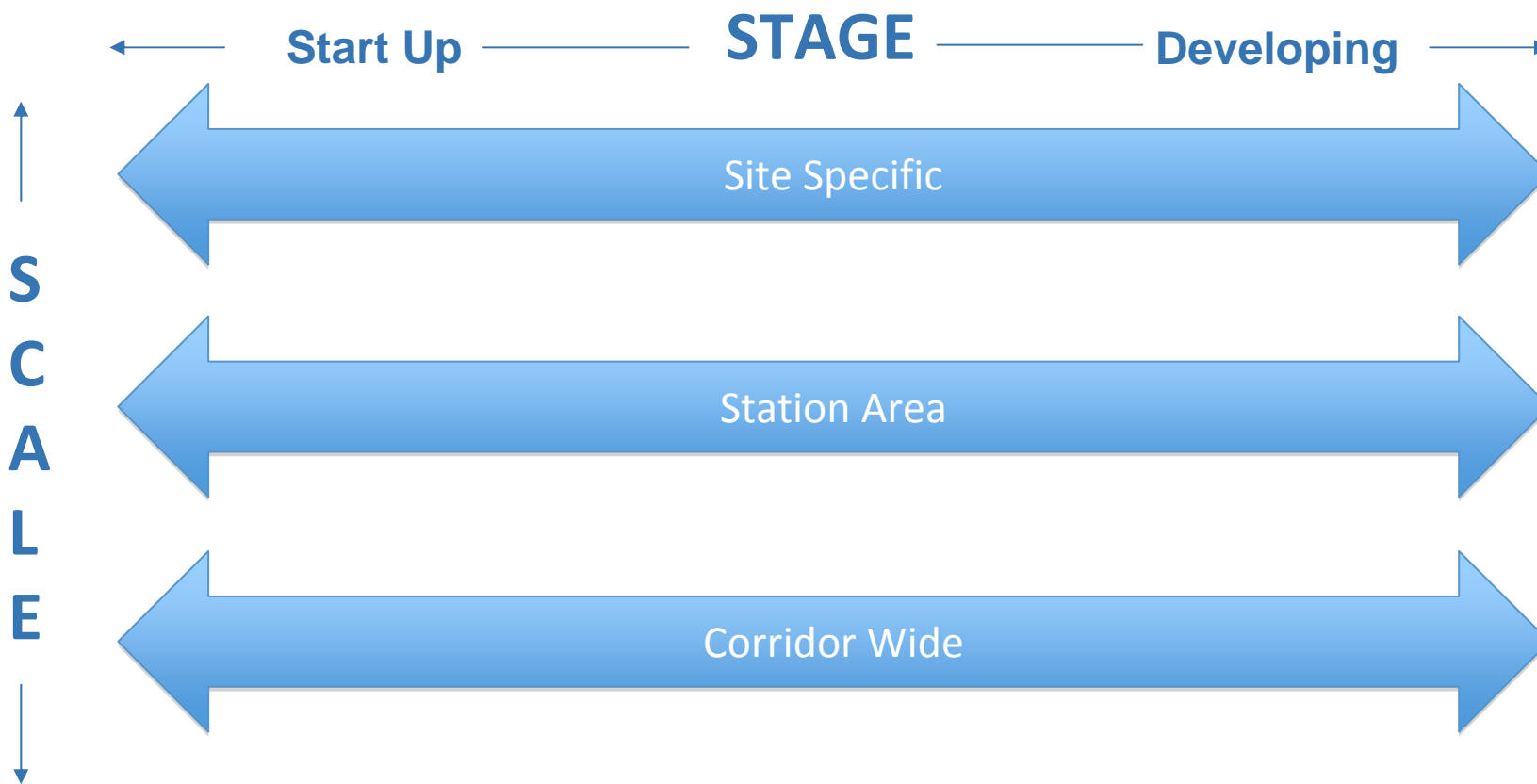
Support for initiatives exist through enthusiasm and resources

Initiatives range in form, scale, and stage





# Project Findings: Conditions







# Project Findings: Challenges

Lack of Connections

Multiple Interests, Distrust & Anxiety

Uneven Capacity

No Corridor Wide Strategy





# Project Findings: Approaches

Collective Impact

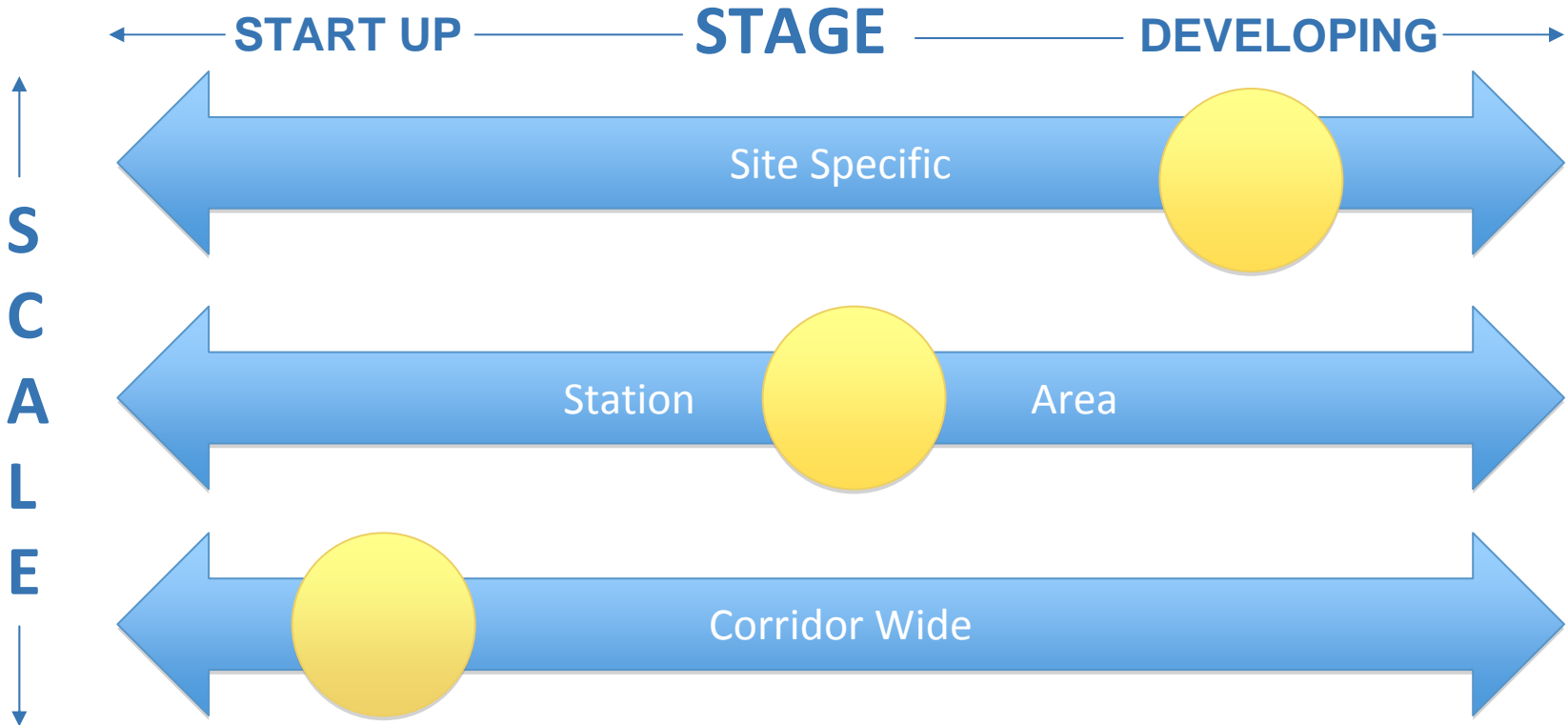
Knight Foundation Soul of the Community

National Main Street Center Four-Point Approach





# Recommendations

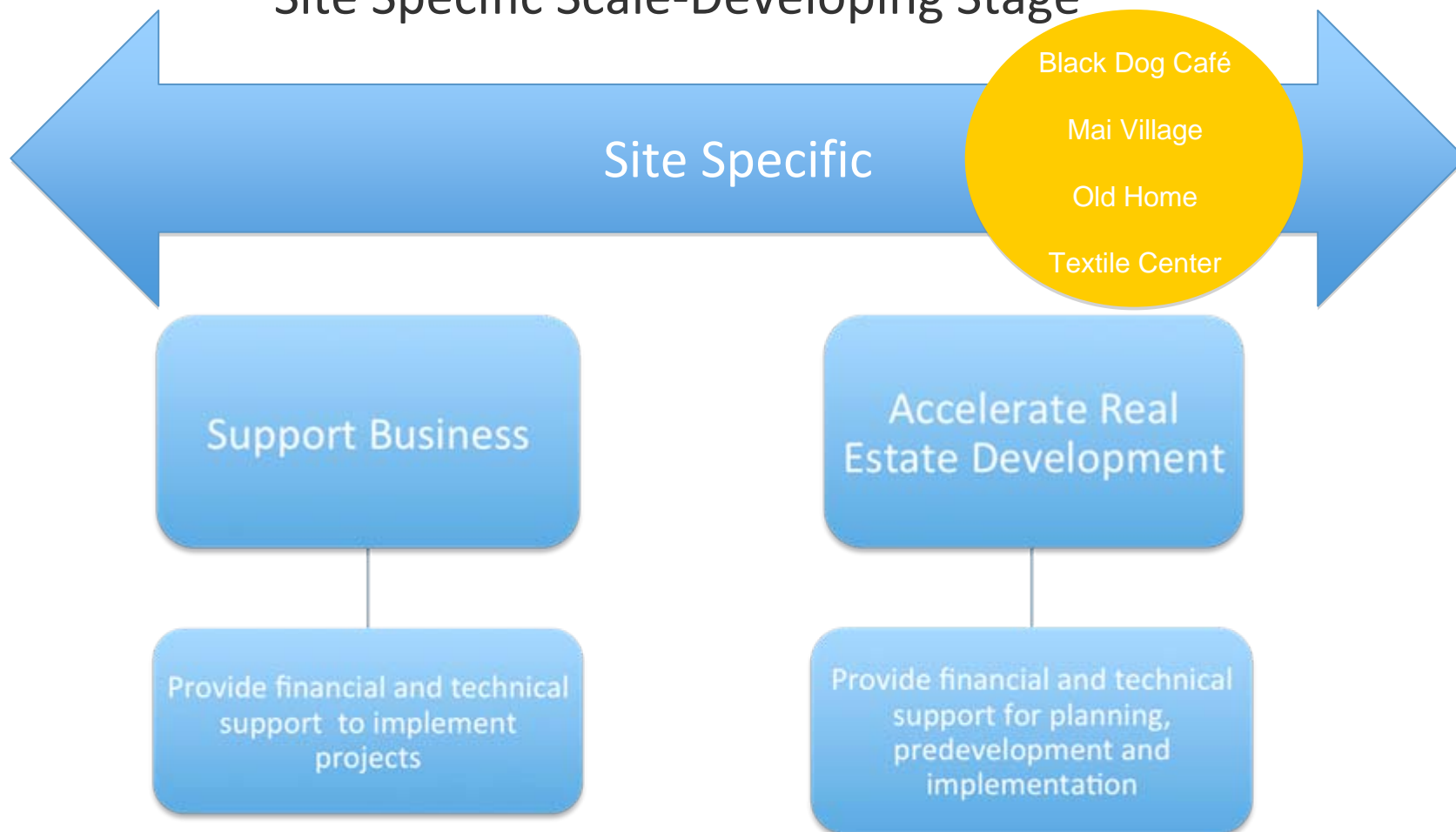






# Recommendation:

## Site Specific Scale-Developing Stage

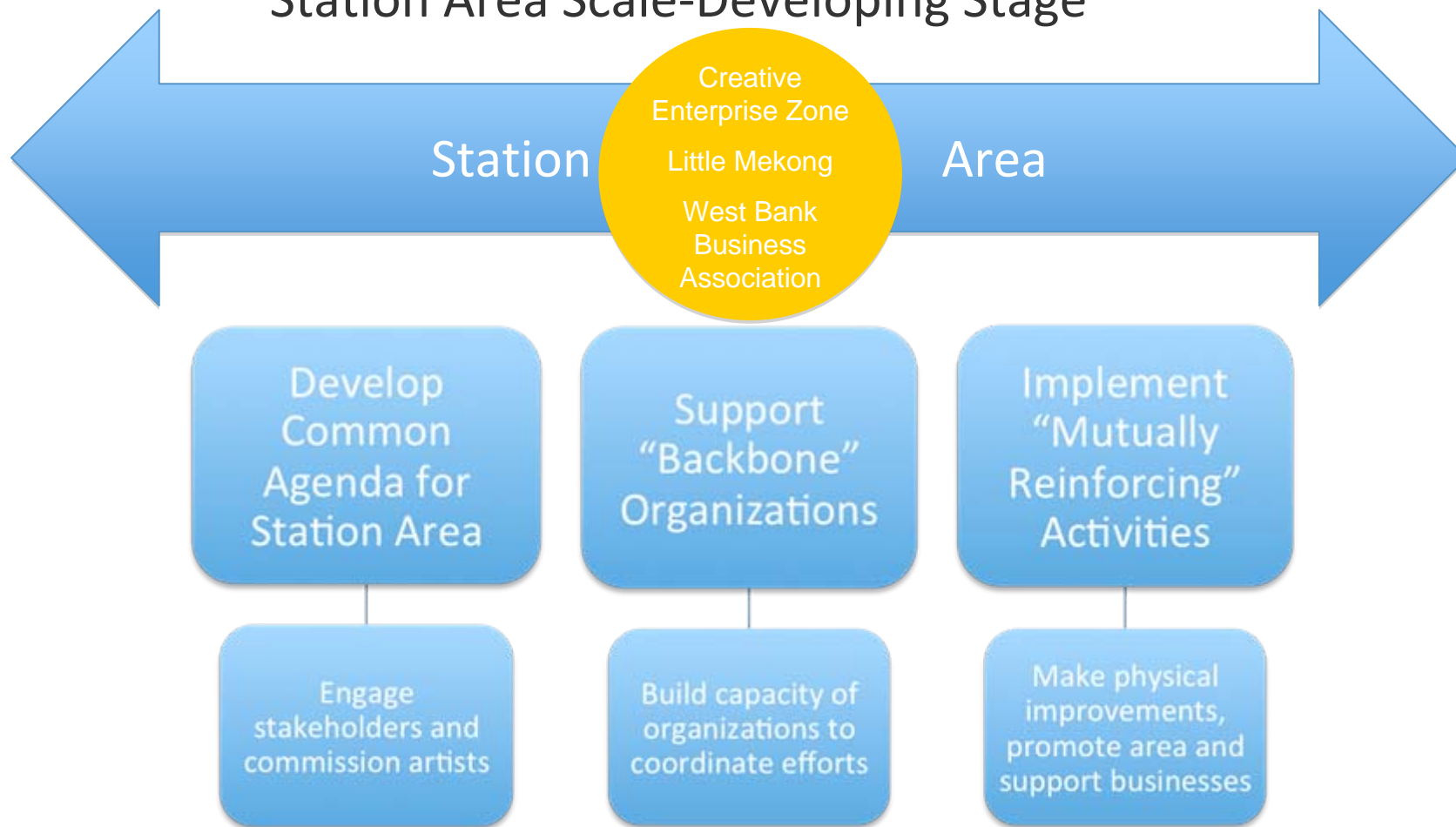


### Potential Partners & Resources

Artists • Business Resource Collaborative • Central Corridor Design Center • Convention and Visitors Bureau • Irrigate Starling • MOD & CO. • Public Art Saint Paul • Twin Cities Community Land Bank • Twin Cities LISC • U7



# Recommendation: Station Area Scale-Developing Stage



### Potential Partners & Resources

Artists • Business Resource Collaborative • Central Corridor Design Center • Convention and Visitors Bureau • Irrigate Starling • MOD & CO. • Public Art Saint Paul • Twin Cities Community Land Bank • Twin Cities LISC • U7

# Project Recommendation:

## Corridor-Wide Scale-Start-Up Stage



### Potential Partners & Resources

Artists • Business Resource Collaborative • Central Corridor Design Center • Convention and Visitors Bureau • Irrigate Starling • MOD & CO. • Public Art Saint Paul • Twin Cities Community Land Bank • Twin Cities LISC • U7



# Recommendations

- **Support Businesses and Real Estate Development at the Site Specific Scale-Developing Stage**
- **Support Station Area Development at the Station Area Scale-Developing Stage**
- **Support Corridor Wide Development at the Corridor Wide Scale-Start Up Stage**



Thank you!

Questions for Clarity?